



Since 1993 United Mining Equipment has been servicing the mining industry. United Mining Equipment Inc. and United Mining Equipment (Baotou) Co. Ltd., offer a wide range of valves used in the mining industry. Through a network of distributors in North America UME has become the largest after market supplier of replacement valves in the United States. UME is also a single source supplier to the only Roof Support Manufacturer in North America. UME has a reputation second to none and is known for high quality at reasonable prices. UME (Baotou) is a Wholly Owned Foreign Entity (WFOE) of UME Inc. and has the same standards of quality and dedication.

联合矿业设备自1993年成立以来一直服务于采矿业。联合矿业设备有限公司和联合矿业设备（包头）有限公司提供广泛应用在采矿业的阀门。在美国北部UME通过分销网已经成为美国最大的售后市场中置换类阀门的供应商，也是美国北部唯一一家液压支架生产商的单一货源供应商。UME以高质量及合理的价格在行业内的声誉首屈一指。UME包头由UME美国独资经营，与UME美国有着相同的质量标准竭诚为客户服务。

UME has full design capability and engineering support available to custom design solutions that meet our customers needs. Our bilingual (English & Chinese) engineering staff has a vast and diverse experience base and approach customer challenges with innovative solutions to complex problems.

UME完全的设计能力和工程技术支持，为客户提供各种解决方案满足客户需求。中英文双语的工程技术人员拥有着丰富多样的经验基础，用创新方法解决复杂的难题达到客户要求。



UME Inc. has developed test equipment to meet the high standards demanded by the mining industry. Every valve has documented test procedures that are followed stringently by the technicians. With 100% testing we insure that every valve meets all the requirements that it will give it a long productive lifecycle.

UME美国研发的测试设备满足采矿业高标准的要求。技术人员严格遵照测试程序步骤测试阀门，全面的测试我们确保了每个阀门满足较长寿命周期的所有要求。





UME Inc. has fully trained technicians with decades of experience that have seen almost every situation. This experience allows them to find potential issues before they arise shortening down time and maintenance costs.

UME拥有的技术团队，均接受过全面的技术培训，他们从业几十年，经验丰富能够发现潜在的问题，缩短维修时间、降低维修成本。

UME (Baotou) is staffed with technicians trained in the US by UME Inc. This ensures the same quality of service offered in China as we offer in North America. Our technicians at UME (Baotou) are constantly updated and trained on new techniques from the US staff.

UME包头技术团队外派美国接受技术培训，之后不断接收UME美国的信息更新，保持与UME美国信息同步，这确保了UME在中国区的服务品质与美国北部服务品质一致。



UME Inc. has developed test equipment to meet the high standards demanded by the mining industry. Every valve has documented test procedures that are followed stringently by the technicians. With 100% testing we insure that every valve meets all the requirements that it will give it a long productive lifecycle.

UME美国研发的测试设备满足采矿业高标准的要求。技术人员严格遵照测试程序步骤测试阀门，全面的测试我们确保了每个阀门满足较长寿命周期的所有要求。

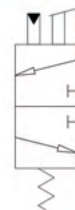
UME (Baotou) has imported test equipment from the US. All procedures have been perfected for many years at UME Inc. and are followed by UME (Baotou). The test equipment is periodically calibrated and maintained in Baotou, China.

UME包头的测试设备从UME美国进口，整个测试程序已由UME美国完善多年，现由UME包头继承，设备的后期定期校准及维护工作都将在中国包头进行。



50-30-0000

Spool valve
Hydraulic and manual operations
DN12 Sizing
滑阀
液控和手动操作
DN12口径

**50-32-0000**

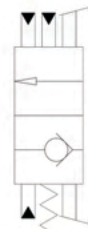
Spool valve
Hydraulic and manual operations
DN12 Sizing
滑阀
液控和手动操作
DN12口径

**50-34-0000**

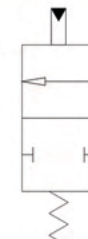
Spool valve
Hydraulic operation only
DN12 Sizing
滑阀
液控操作
DN12口径

**50-40-0000**

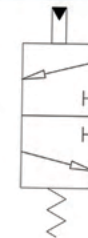
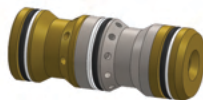
Push lock valve
Used in compak valve banks
Used to hydraulically lock a spool
推压式锁止阀
用于液压锁止阀芯
用在Compak组阀中

**50-62-0000**

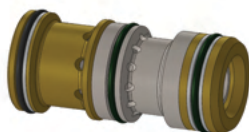
Boost spool valve
2/2 valve used with spool to boost speed
DN20 Sizing
推动滑阀
二位二通阀
DN20 口径

**60-48-0000**

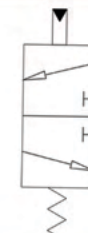
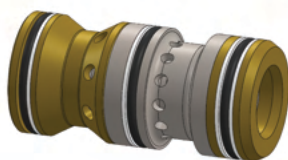
NG6 Control Valve
For small cylinder control
NG6 口径控制阀
适用于小油缸控制

**60-49-0000**

NG13 Control Valve
For medium cylinder control
NG13 口径控制阀
适用于中型油缸控制

**60-50-0000**

NG20 Control Valve
For large cylinder control
NG20 口径控制阀
适用于大型油缸控制



50-06-0000

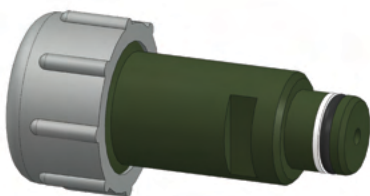
Check valve

Used to provide clean external access to seal volumes

Used with 50-36-0000

单向阀

用于为油缸提供另一外部供油渠道
与50-36-0000配合使用



50-36-0000

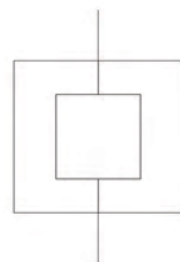
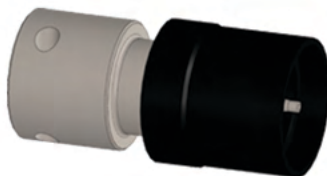
Check valve adaptor

Used to provide access to cylinder

Used with 50-06-0000

单向阀适配接头

用于液压油缸的适配连接
与50-06-0000配合使用



60-43-0000

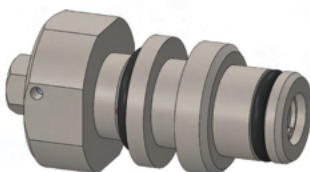
Bleed adaptor

Used to provide relief to seal volumes

DN10 sizing

排液适配接头

用于排泻油缸内的液体
DN10口径



51-54-0000

Load lock POCV

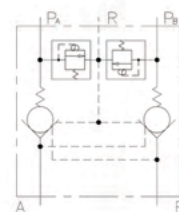
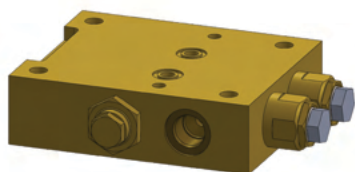
Used on ranging arms

Integrated gas yield valves

载荷锁定液控单向阀

用于摇臂上

集成的充气安全阀



60-20-0000

Leg POCV

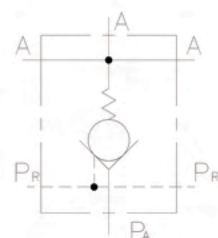
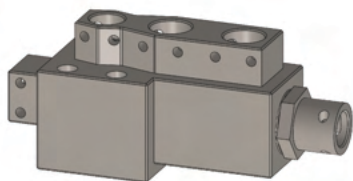
DN12 sizing

For medium leg cylinder

支柱液控单向阀

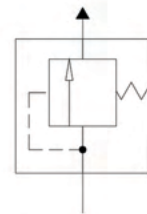
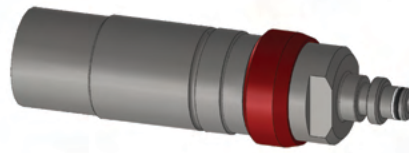
DN12口径

用在中型油缸上



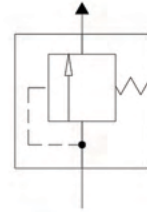
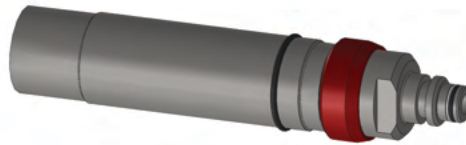
50-67-0000

DN10 spool yield valve
Mechanical operation
For small leg cylinders
DN10柱式安全阀
机械式
用于小油缸



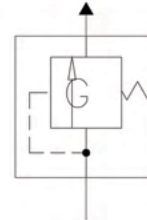
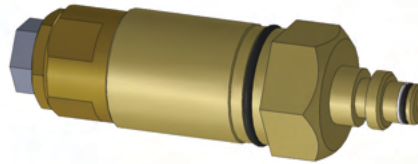
50-77-0000

DN12 spool yield valve
Mechanical operation
For small cylinders
DN12柱式安全阀
气动式
用于小油缸



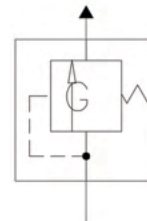
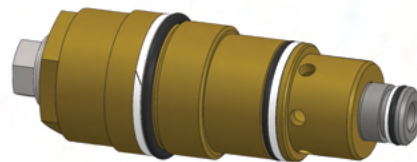
50-84-0000

DN10 gas yield valve
Gas operation
For small cylinders
DN10 充气安全阀
气动式
用于小油缸



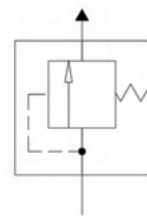
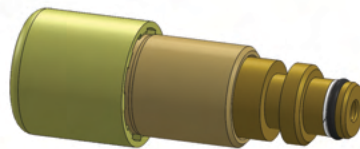
51-52-0000

Gas yield valve
Used in Compak valve banks
充气安全阀
用在Compak组阀里



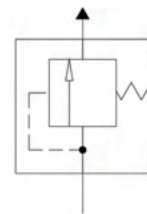
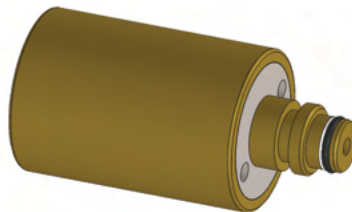
59-01-0000

DN10 mechanical yield valve for very small cylinders
DN10机械式安全阀，用于小油缸



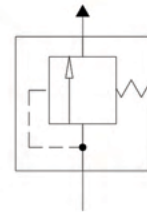
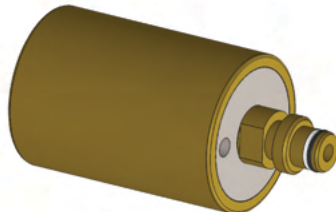
59-10-0000

DN12 mechanical yield valve
For medium/large cylinders
机械式安全阀
用于大中型油缸



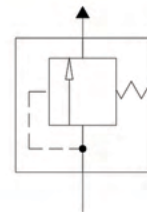
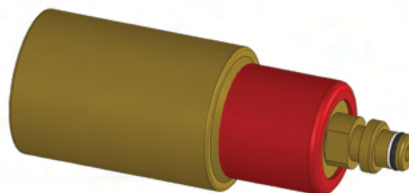
59-12-0000

DN10 mechanical yield valve
For medium/large cylinders
DN10 机械式安全阀
用于大中型油缸



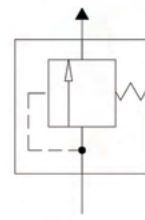
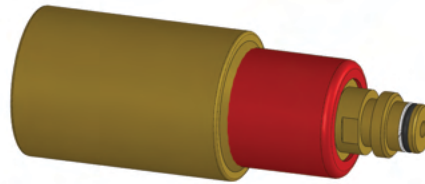
59-13-0000

DN10 mechanical yield valve
For large cylinders
DN10 机械式安全阀
用于大油缸



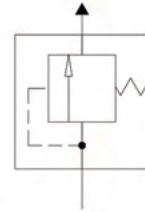
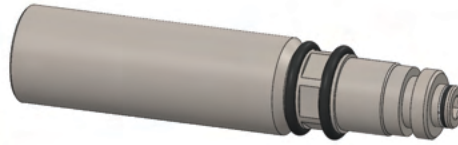
59-14-0000

DN12 mechanical yield valve
For large cylinders
DN12 机械式安全阀
用于大油缸



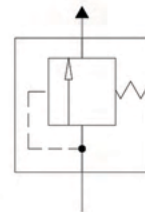
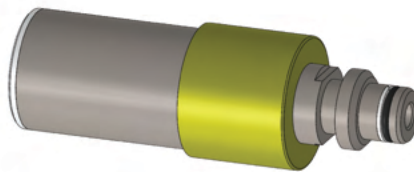
59-30-0000

Mechanical yield valve
DN20 sizing
To protect against Rockbursts
机械式安全阀
DN20 公称直径
保护液压系统免于蹦爆



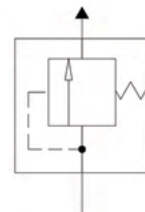
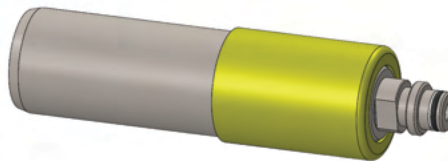
60-40-0000

DN10 mechanical yield valve
For small cylinder protection
DN10 机械式泄压阀
用于小油缸保护



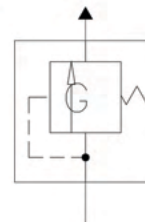
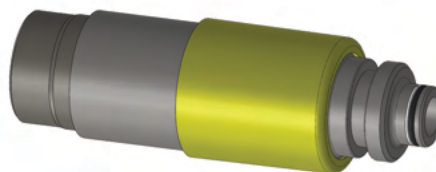
60-41-0000

DN12 mechanical yield valve
For medium/large cylinder protection
DN12 机械式泄压阀
用于中、大油缸保护



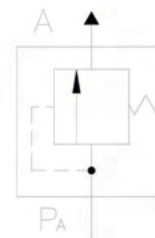
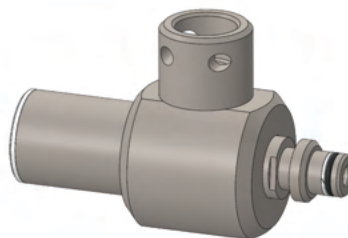
60-45-0000

Gas yield valve
DN20 sizing
To protect against Rockbursts
充气安全阀
DN20口径
保护液压系统免于蹦爆



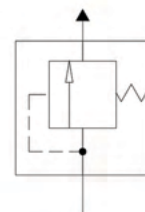
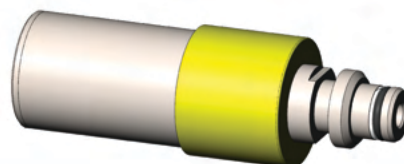
60-46-0000

DN10 mechanical yield valve
Yields to return line
机械式安全阀
回油管路安全阀



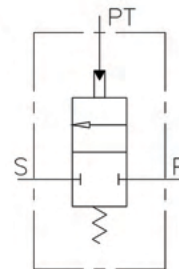
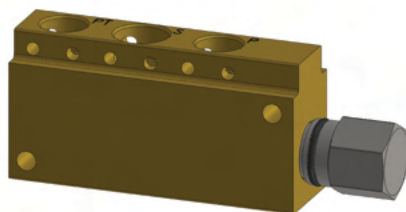
60-59-0000

DN10 Pressure Relief Valve
Low pressure
Less than 100 Bar
DN10 泄压阀
低压
低于100 巴



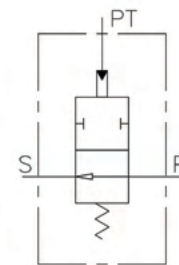
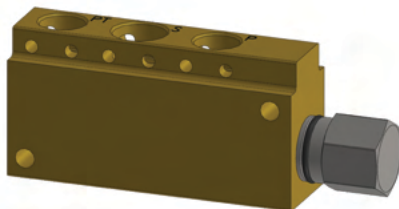
50-63-0000

Normally closed valve
 DN10 sizing
 常闭阀
 DN10 公称直径



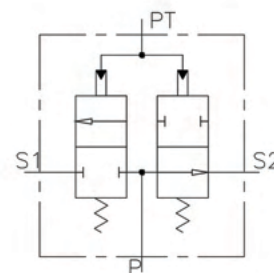
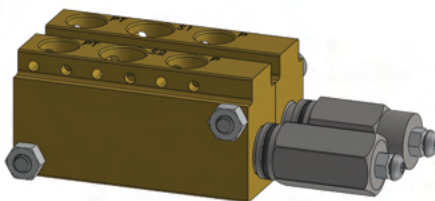
50-65-0000

Normally open valve
 DN10 sizing
 常开阀
 DN10 公称直径



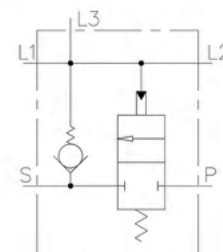
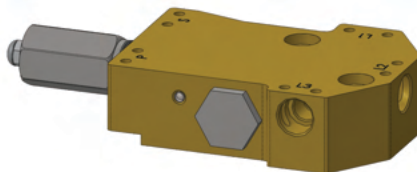
50-66-0000

N/O-N/C Valve
 Dual Piloted N/O-N/C Valve
 DN10 sizing
 常开、常闭一体阀
 双向先导控制常开，常闭
 DN10 公称直径



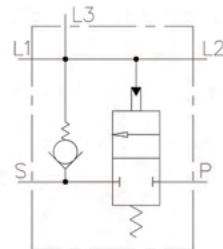
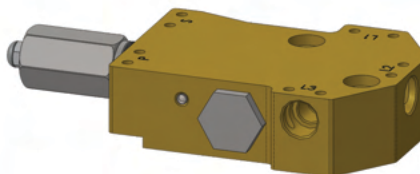
50-72-0000

Guaranteed Set Valve
 Used to ensure both legs are set
 equally
 等压控制阀
 确保两立柱之间的压力相同



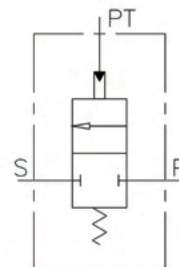
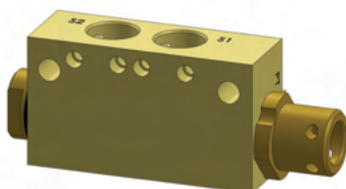
50-80-0000

High flow guaranteed set valve
 Used to ensure both legs are set
 equally
 大流量控制阀
 确保立柱之间的压力相同



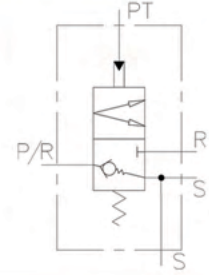
51-15-0000

Normally closed valve
 DN12 sizing
 常闭阀
 DN12口径



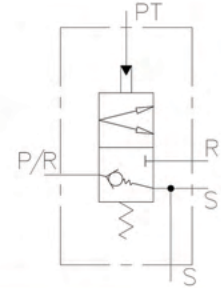
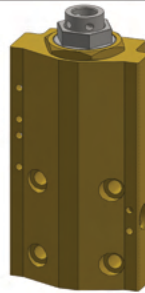
51-07-0000

Left hand high-flow dual return leg
POCV
DN20 sizing
For large leg cylinders
Bushing mounted seal
左立柱大流量双回油管路液控单向阀
DN20口径
用在大型支柱油缸上
径向密封



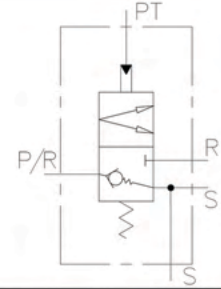
51-08-0000

Right hand high-flow dual return leg
POCV
DN20 sizing
For large leg cylinders
Bushing mounted seal
右立柱大流量双回油管路液控单向阀
DN20口径
用在大型支柱油缸上
径向密封



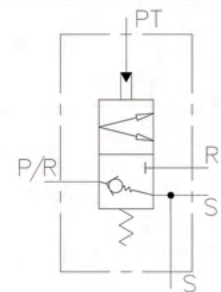
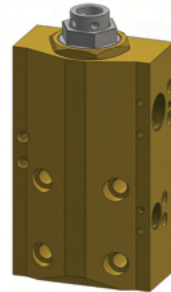
51-40-0000

Left hand high-flow dual return leg
POCV
DN12 sizing
For large leg cylinders
Face mounted seal
左立柱大流量双回油管路液控单向阀
DN12口径
用在大型支柱油缸上
端面密封



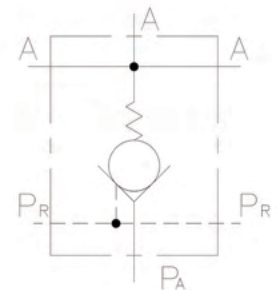
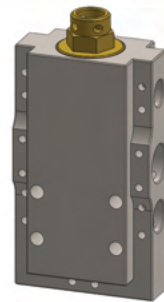
51-41-0000

Right hand high-flow dual return leg
POCV
DN12 sizing
For large leg cylinders
Face mounted seal
右立柱大流量双回油管路液控单向阀
DN12口径
用在大型支柱油缸上
端面密封



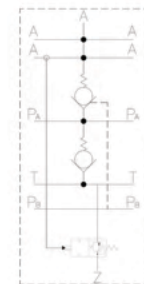
60-21-0000

Leg POCV
DN20 sizing
立柱液控单向阀
DN20口径



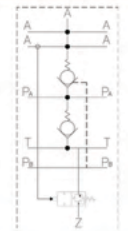
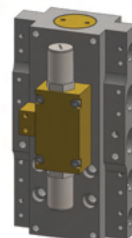
60-66-0000

DN20 POCV with dedicated DN20
return
带DN20专用回油管路的DN20 液控单
向阀



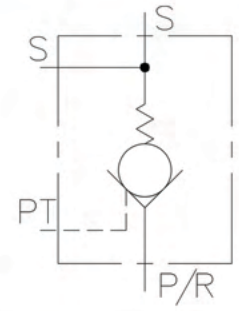
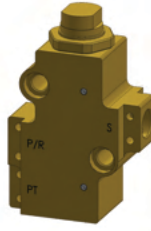
60-67-0000

DN20 POCV with dedicated DN20
return
Integrated KN Valve
带DN20专用回油管路的DN20 液控单
向阀
一体式压力补偿阀



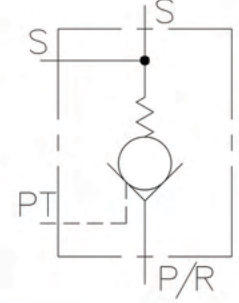
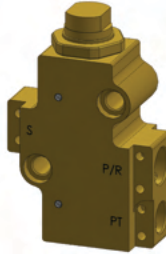
50-70-0000

Right hand leg POCV
 DN10 sizing
 For small leg cylinders
 右立柱液控单向阀
 DN10口径
 用在小型油缸上



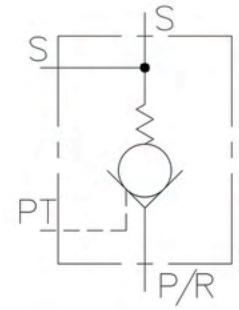
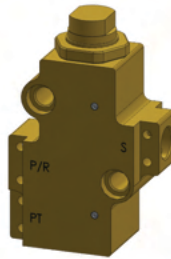
50-71-0000

Left hand POCV
 DN10 sizing
 For small leg cylinders
 左立柱液控单向阀
 DN10口径
 用在小型立柱油缸上



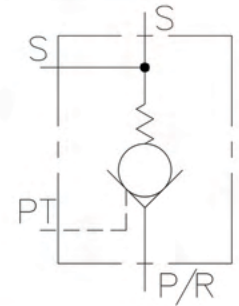
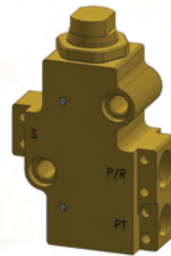
50-78-0000

Right Hand POCV
 DN12 sizing
 For medium leg cylinders
 右立柱液控单向阀
 DN12口径
 用在中型立柱油缸上



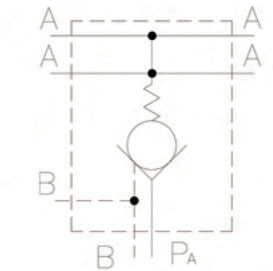
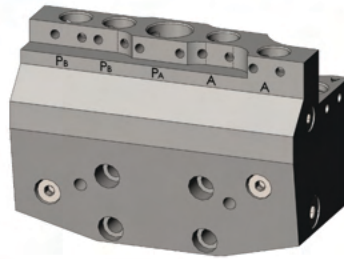
50-79-0000

Left hand POCV
 DN12 sizing
 For medium leg cylinders
 左立柱液控单向阀
 DN12口径
 用在中型油缸上



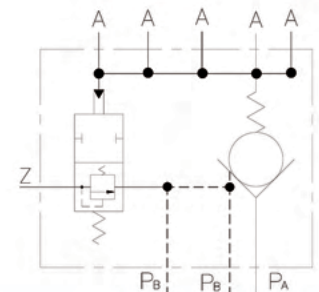
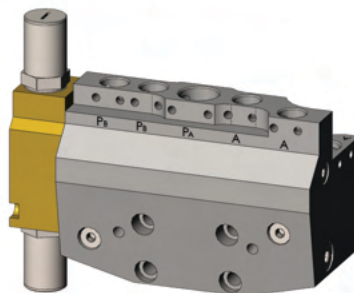
60-57-0000

Leg POCV
 DN20 sizing
 立柱液控单向阀
 DN20口径



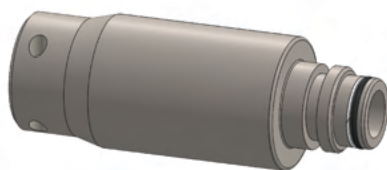
60-58-0000

Leg POCV C/W Kn Valve
 DN20 sizing
 Integrated KN valve for tip function
 带压力补偿的支柱液控单向阀
 DN20接口尺寸
 用于护帮的一体式压力补偿阀



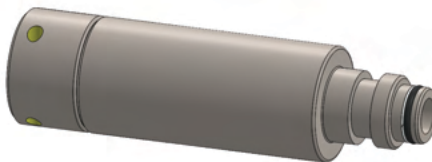
56-02-0000

DN20 Filter
40 Micron
DN20口径
40 微米级



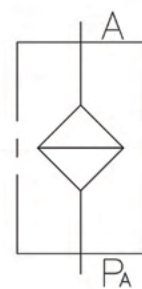
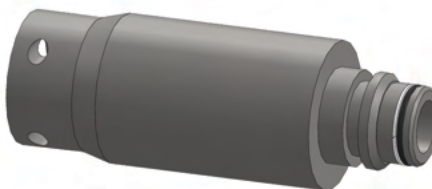
56-04-0000

DN20SS Filter
40 Micron
DN20SS 超高压过滤器
40 微米级



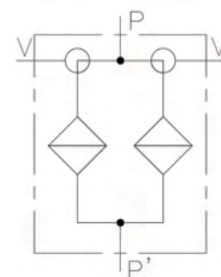
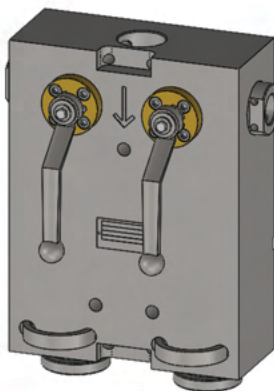
56-06-0000

DN20 100 Micron Filter
DN20 100 微米滤清器



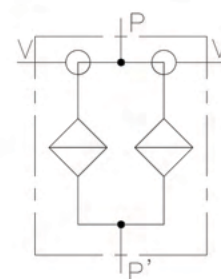
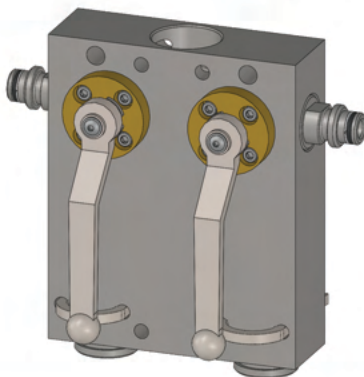
59-27-0000

Back flush Filter
Manual Operation
DN40 sizing
反冲洗过滤器
手动式
DN40口径



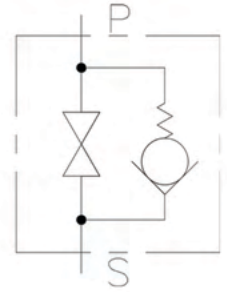
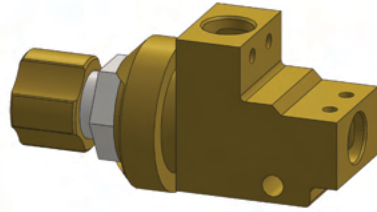
60-38-0000

Back flush Filter
Manual Operation
DN25 sizing
反冲洗过滤器
手动式
DN25口径



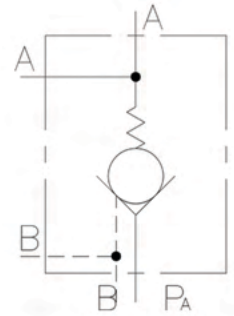
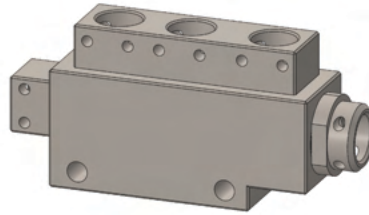
50-41-0000

Isolating Non-Return Valve
DN10 Sizing
Multiple handle colors available
关断单向阀
DN10口径
多种颜色手柄可选



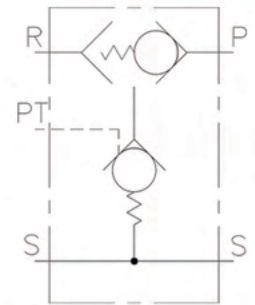
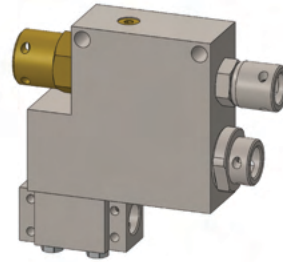
60-25-0000

Prop Check Valve
DN12 sizing
Used on advancing rams
比例单向阀
DN12口径
用在传送带托架推移油缸上



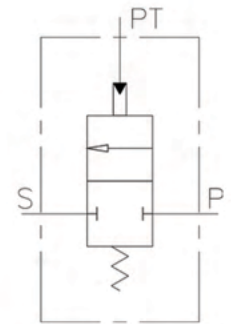
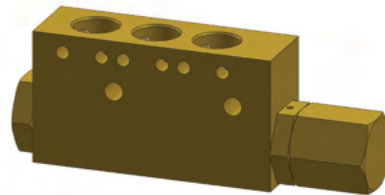
60-26-0000

Combination check & shuttle valve
DN12 sizing
Used on advancing rams
单向阀和梭阀一体阀
DN12口径
用在传送带托架推移油缸上



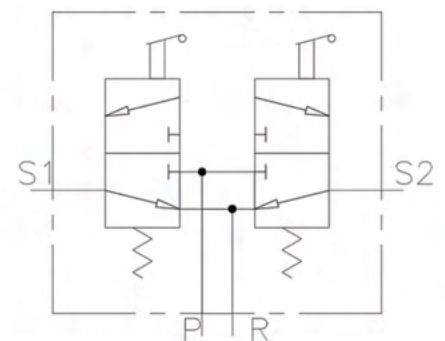
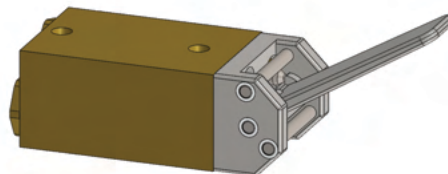
60-36-0000

Water Spray Valve
DN10 sizing
喷水阀
DN10口径



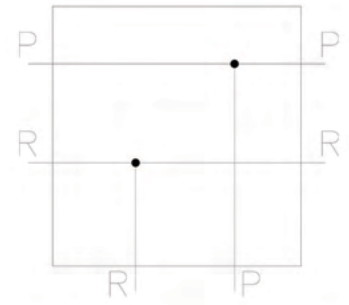
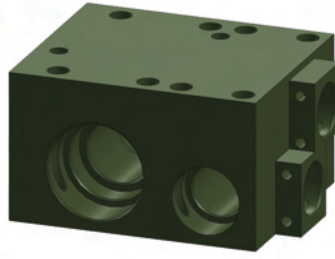
60-52-0000

Twin pilot valve
DN10 Sizing
双液控单向阀
DN10口径



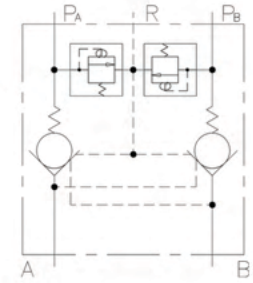
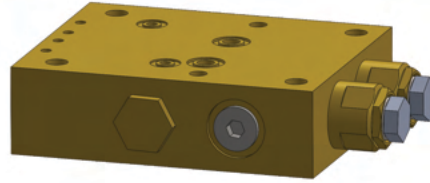
50-74-0000

Manifold
 DN40/32/20 sizing
 集成块阀
 DN40/32/20口径



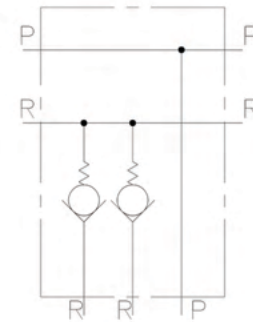
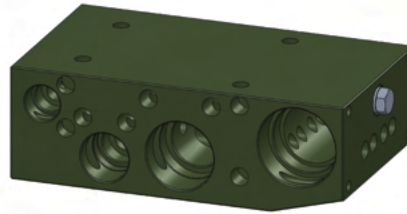
51-14-0000

Load Lock POCV
 Used on ranging arms
 Integrated gas yield valves
 载荷锁定液控单向阀
 用于摇臂上
 一体式充气安全阀



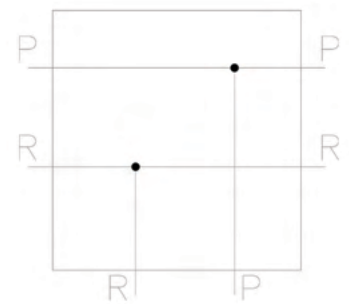
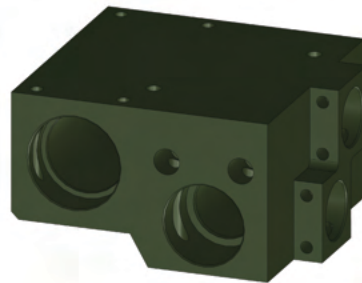
51-19-0000

DN50/40SS/25 Manifold with
 integrated return check
 DN50/40SS/25 带回油路单向阀的集
 成块阀



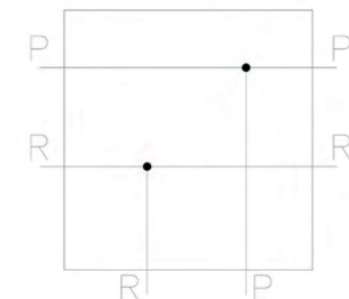
52-03-0000

Manifold
 DN50/40SS/25 sizing
 集成块阀
 DN50/40SS/25口径



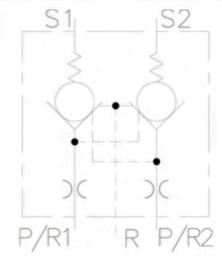
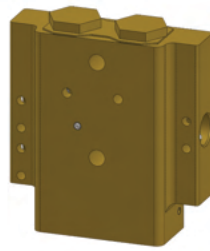
52-05-0000

Feed Return Manifold
 DN50/40SS/25 sizing
 Angled entries for shield to shield hoses
 餵返回歧管
 DN50/40SS/25口径
 用于支架间液压软管连接的倾斜接口



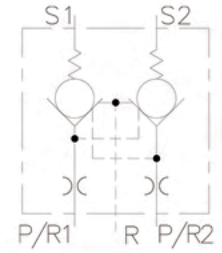
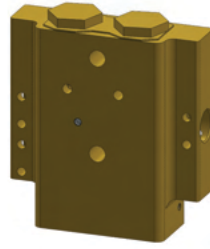
50-76-0000

Twin Check Valve
For Tip Cylinders
DN10 sizing
双液控单向阀
用于推移油缸
DN10口径



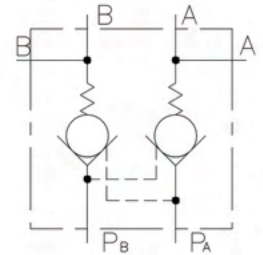
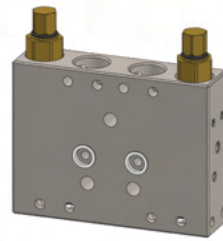
51-04-0000

Twin Check Valve
For Sprag cylinders
DN10 sizing
双液控单向阀
用于护帮油缸
DN10口径



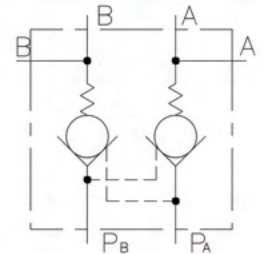
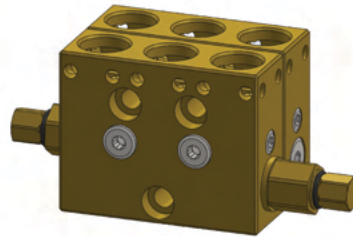
60-24-0000

Twin Check Valve with removable
cartridge 60-24-0100
阀芯 60-24-0100 可拆卸式双液控
单向阀



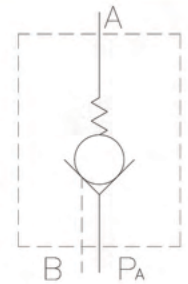
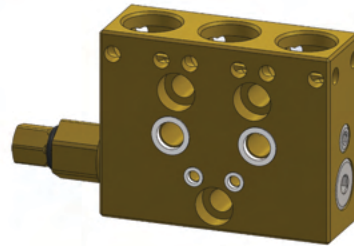
60-27-0000

Twin Check Valve with removable
cartridge 60-24-0100
阀芯 60-24-0100 可拆卸式双液控
单向阀



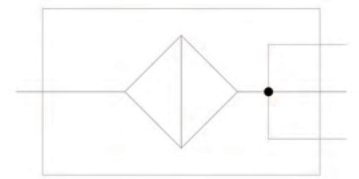
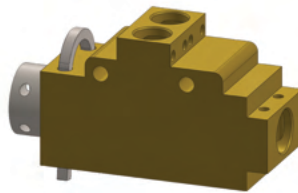
60-28-0000

Single Check Valve with removable
cartridge 60-24-0100
阀芯 60-24-0100 可拆卸式液控单向
阀



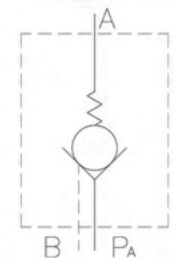
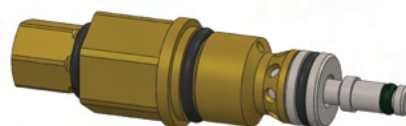
51-24-0000

Filter tee
DN12 sizing
Used for water
三通过滤器
DN12口径
用于过滤水



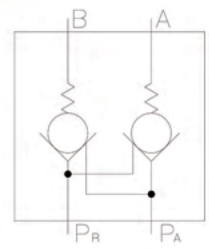
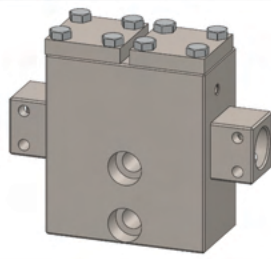
60-24-0100

Check valve
Used in a variety of manifolds in small
cylinders
单向阀
用在各种小油缸的集成块阀中



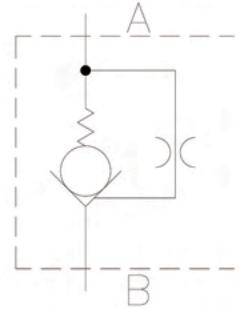
60-30-0000

Twin Check Valve
 DN10 sizing
 双液控单向阀
 DN10口径



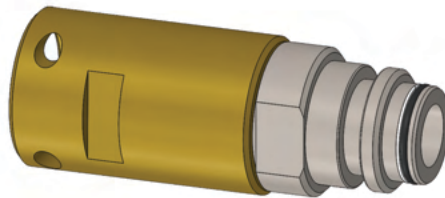
60-37-0000

Pretension Valve
 预（先加）载阀



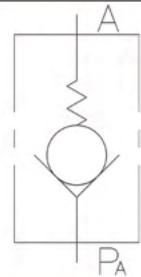
60-42-0000

Check Valve NW25 Assy
 DN单向阀组



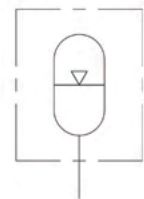
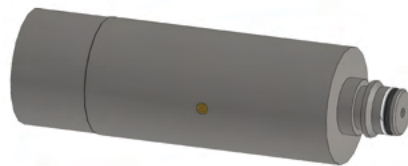
60-47-0000

Used to keep solenoids pressurized
 NG2 sizing
 Check valve
 单向阀
 NG2口径
 用于电磁阀保压



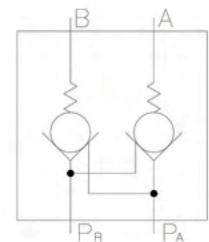
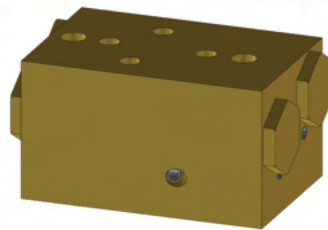
60-51-0000

Accumulator
 DN20 Sizing
 Used to pressurize solenoids
 蓄能器
 DN20口径
 给电磁阀提供压力



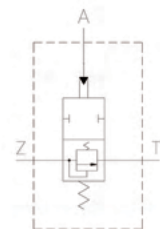
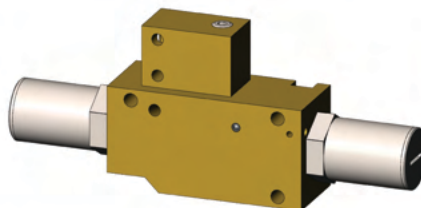
60-53-0000

Twin Check Valve
 Used with 60-52-0000
 双液控单向阀
 与60-52-0000配合使用



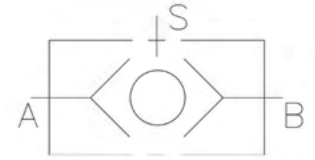
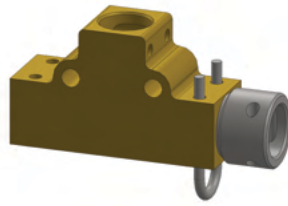
60-58-0100

Compensating Valve
 Opens on pre-load or closes on pilot
 压力补偿阀
 在预载荷作用下开启，在先



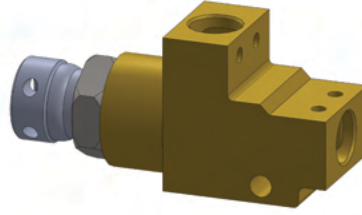
51-11-0000

Full Flow Shuttle Valve
 DN12 sizing
 全流量梭阀
 DN12口径



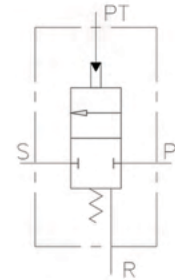
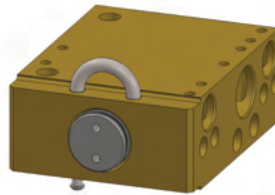
51-13-0000

Full Flow Shuttle Valve
 DN10 sizing
 全流量梭阀
 DN10口径



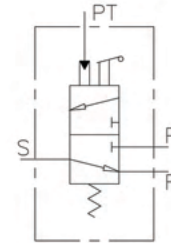
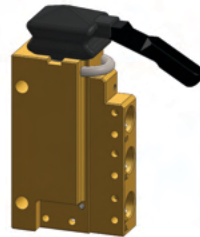
51-58-0000

Remote Boost Spool
 DN20 sizing
 远程控制增压阀
 DN12 口径



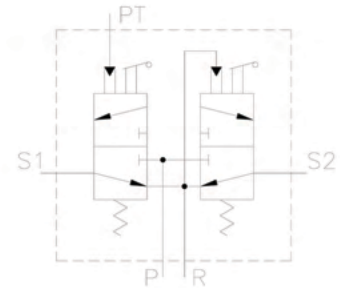
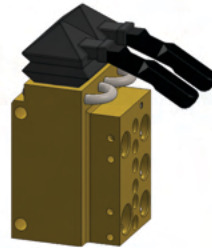
51-66-0000

Single Spool Valve
 Hydraulic & Hand Operation
 DN12 sizing
 单芯滑阀
 液动和手控
 DN12口径



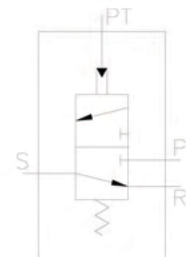
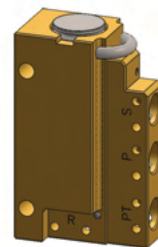
51-70-0000

Twin Spool Valve
 One hydraulic operated, One manual
 operated
 DN12 sizing
 双芯滑阀
 一个液控，另一个手控
 DN12口径



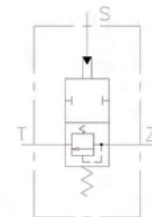
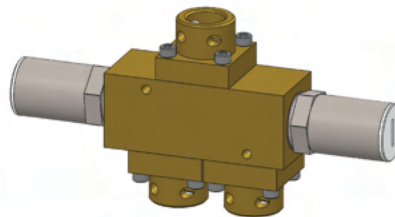
51-71-0000

Single Spool Valve
 Hydraulic operated only
 DN12 sizing
 单阀芯液控式
 DN12口径



60-31-0000

Compensating Valve
 Opens on pre-load or closes on pilot
 压力补偿阀
 在预载荷作用下开启，在先导压力的
 作用下关闭



50-20-0000

Electro hydraulic solenoid
电液换向阀



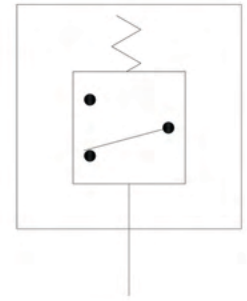
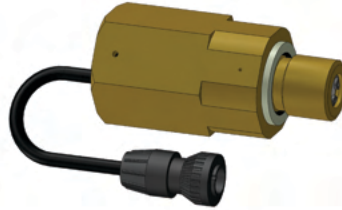
50-24-0000

Electro hydraulic solenoid
电液换向阀



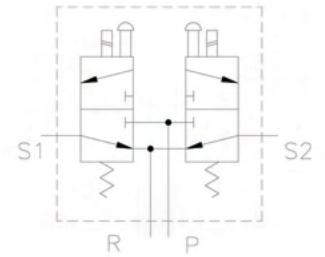
50-50-0000

Pressure switch pre-settable from 69
BAR to 250BAR
可预调压力开关（调压范围：69-250
巴）



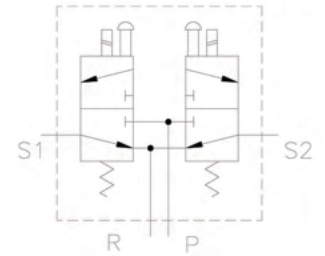
60-00-0000

Double 3/2 Way Solenoid Assembly
(W/Lumberg Conn.)
双三通二位电磁阀组（带隆堡连线）



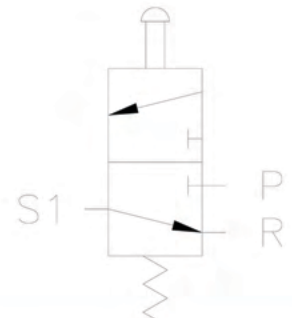
60-15-0000

Double 3/2 Way Solenoid Assembly
双三通二位电磁阀组



60-06-0000

Cartridge NG0.5 Assembly
NG0.5 阀芯组阀



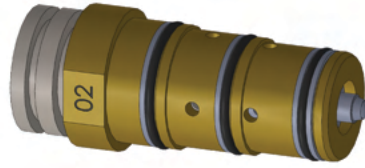
50-52-0000

Striker Valve

Used in cylinder to show advancement

行程开关阀

用于限制油缸行程



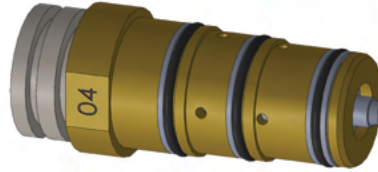
50-54-0000

Striker Valve

Used in cylinder to show advancement

行程开关阀

用于限制油缸行程



51-12-0000

High-pressure non-return valve

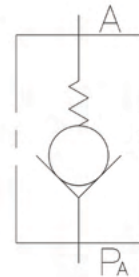
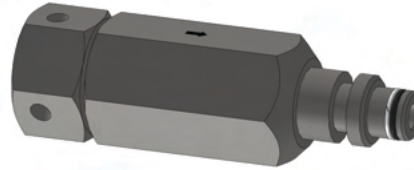
Suitable to 700BAR

DN10 sizing,

高压止回阀

适用压力高达700巴

DN10口径



51-16-0000

Hydro-Fuse

One time quick yield at 550BAR

Not resettable

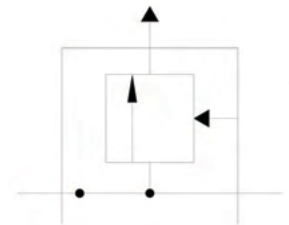
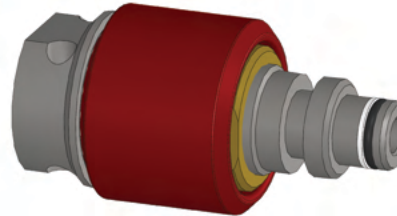
DN10

液力断流保险丝

在550巴的压力下，快速断开

不可复位

DN10口径



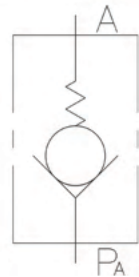
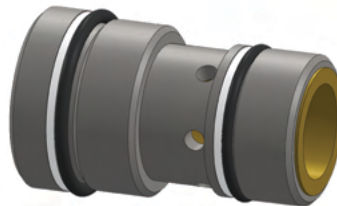
51-39-0000

High-pressure check valve

Used in Compak valve banks

高压单向阀

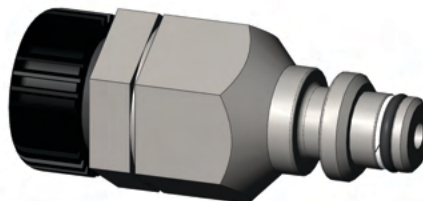
用在 Compak 组阀里



60-17-0000

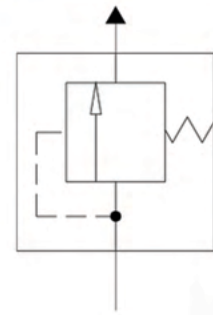
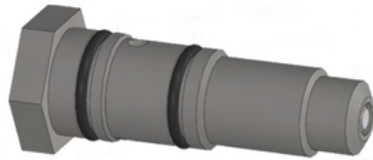
Check Valve

单向阀



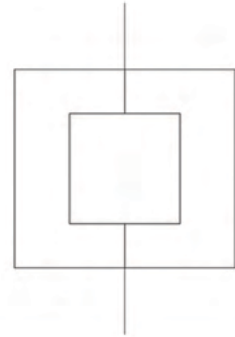
50-02-0000

Low pressure relief valve
 Used to relieve high return pressure
 from solenoids
 低压泄压阀
 用于释放来自于电磁阀的高压力



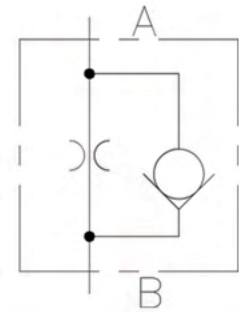
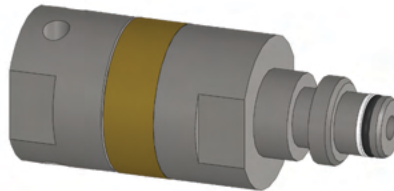
50-03-0000

Banjo fitting
 Used with LPRV to vent to atmosphere
 油管接头
 与低压泄压阀配合使用，将压力释放到空气中



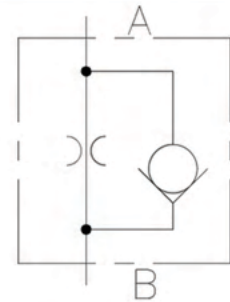
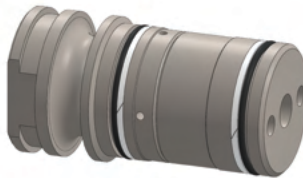
50-10-0000

Restrictor with full flow in opposite
 direction
 DN10 sizing
 反向全流量节流阀
 DN10口径



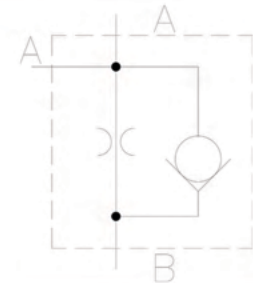
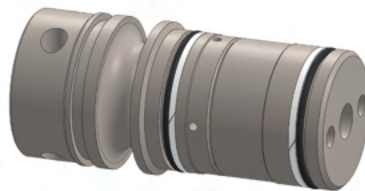
51-43-0000

Restrictor
 Used in compak valve banks
 Internal porting
 节流阀
 用在Compak组阀里
 内部端口



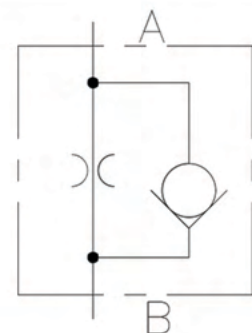
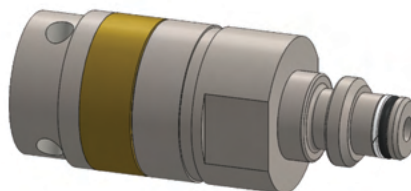
51-49-0000

Full flow in one direction restrictor
 Used in compak valve banks
 反向全流量节流阀
 用在Compak组阀里



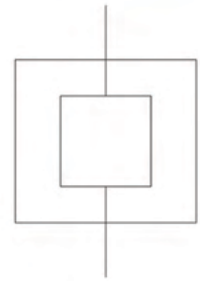
51-62-0000

Spring returned restrictor
 Full flow in opposite direction
 DN10
 弹簧复位单向节流阀
 反向全流量(正向节流)
 DN10口径



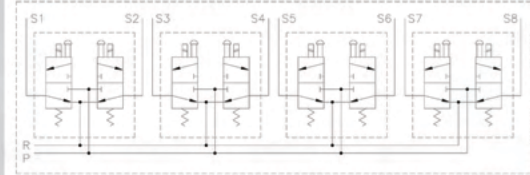
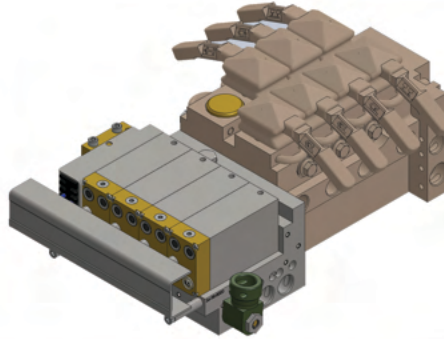
51-68-0000

Push Lock Bank
推锁阀组



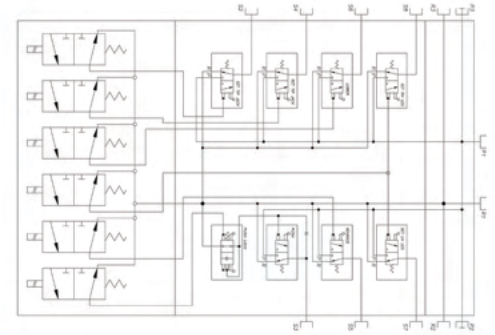
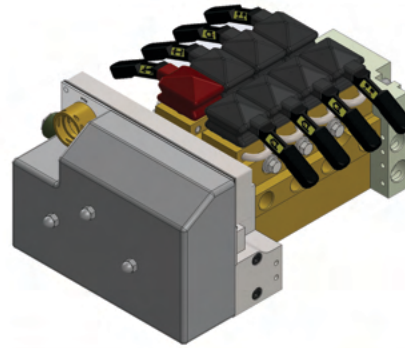
52-45-0000

Marco Conversion Kit
Marco 转换组件



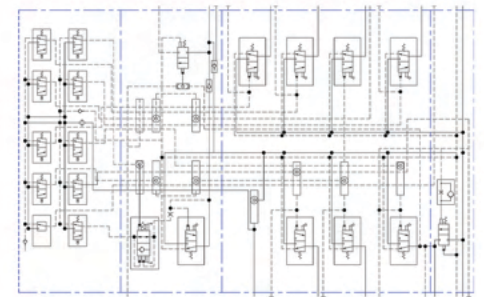
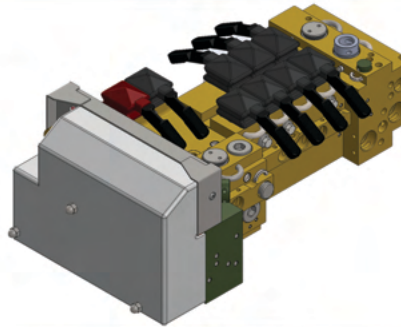
54-82-0000

Compak Assembly 6sol 2 ps
short block for ms30 j box
6功用康帕克阀组



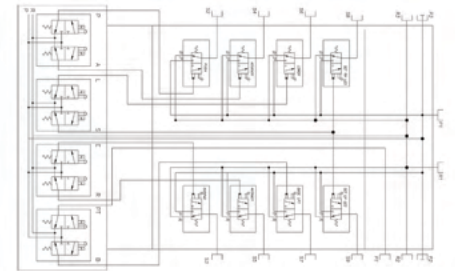
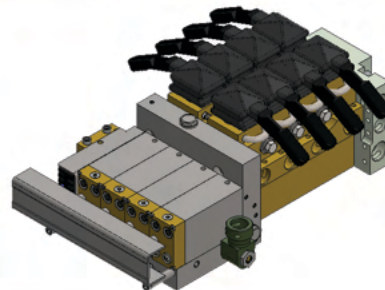
54-93-0000

Compak Assembly 9sol 8sp 1 pl
2 bsp
9功用康帕克阀组



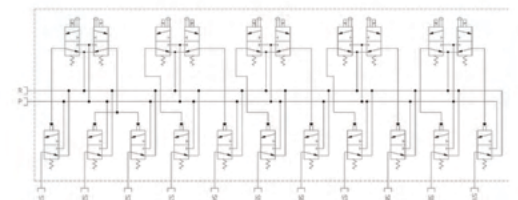
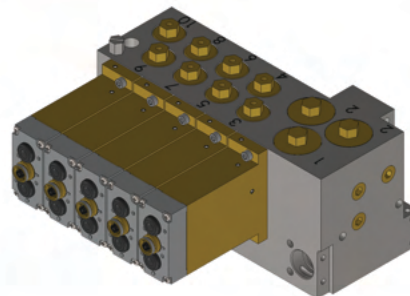
54-99-0000

Marco Compak, 8 function
8功用马可-康帕克阀组



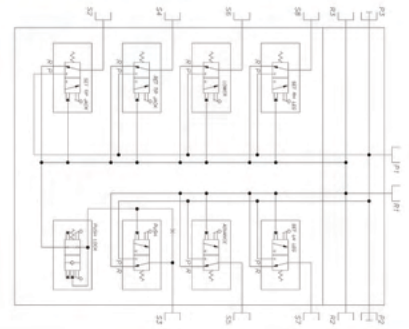
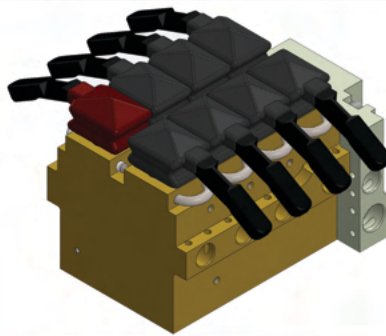
64-03-0000

Control Unit 10 Function
10 功能控制单元



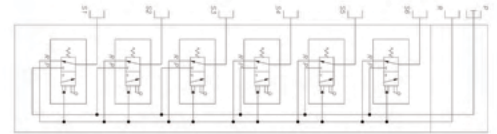
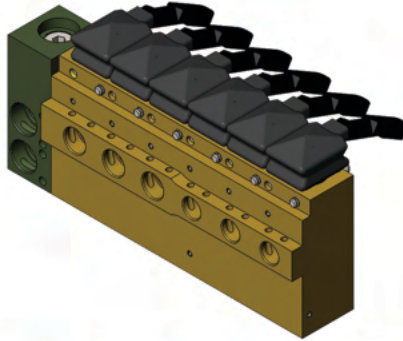
55-04-0000

6 function manual compak
Independent valves for leg sets
Dn12 spool valves
Locking valve for conveyor push
传送带推移锁止阀
支柱独立阀
DN12 滑阀
6 功能手动Compak组阀



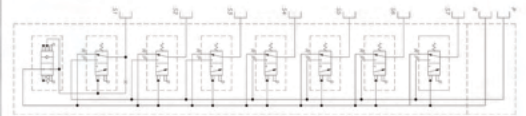
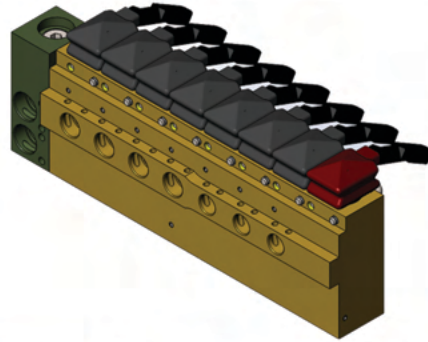
55-05-0000

6 function valvebank
6 dn12 spool valves
6 功能阀组
6 功能DN12滑阀



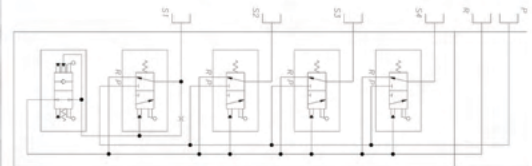
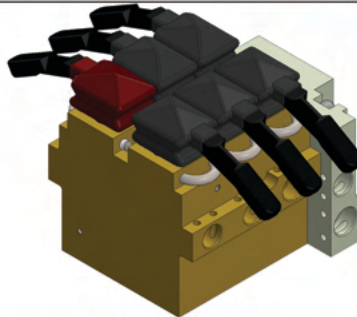
55-06-0000

6 function plus lock valvebank
Independent valves for leg sets
Dn12 spool valves
Locking valve for conveyor push
6 功能带锁止阀阀组
支柱独立阀
DN12滑阀
传送带推移锁止阀



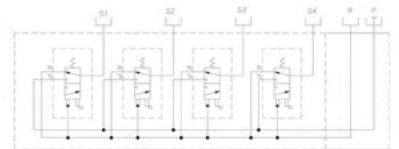
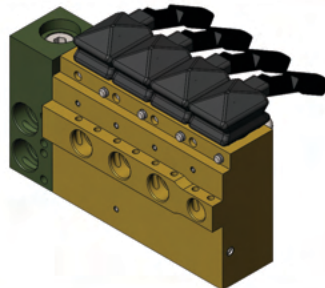
55-07-0000

4 function Compak with pilot lock
DN12 spool valves
One valve has pilot lock for conveyor
push
带先导锁的4 Compak 阀组合阀
DN12阀芯
其中一个带有先导锁的阀用于输送带
推移



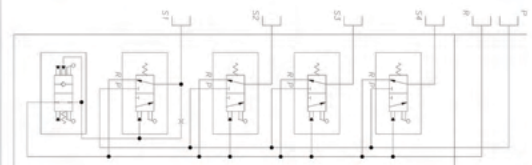
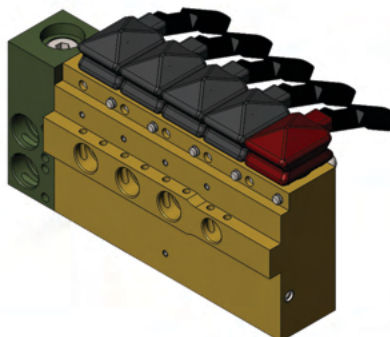
55-08-0000

4 function valve bank
DN12 spool valves
4 阀组合阀
DN12阀芯



55-09-0000

4 function valvebank with pilot lock
DN12 spool valves
One valve has pilot lock for conveyor
push
带先导锁的4阀组合阀
DN12阀芯
其中一个带有先导锁的阀用于输送带
推移



Certificates

证书

Filed in the Department of
 FEB 15 1994
 Secretary of the Commonwealth

COMMONWEALTH OF PENNSYLVANIA
 DEPARTMENT OF STATE
 CORPORATION BUREAU

ARTICLES OF INCORPORATION
 OF
 UNITED MINING CABLE, INC.

The undersigned, intending to form a corporation under the Pennsylvania Business Corporation Law of 1988 (15 Pa. C.S. §§1101 et seq.), as amended, hereby certifies as follows:

FIRST. The name of the Corporation is United Mining Cable, Inc. (the "Corporation").

SECOND. The address of the Corporation's initial registered office in the Commonwealth of Pennsylvania is 1413 Pittsburgh Road, Valencia, Pennsylvania 16059.

THIRD. The Corporation is incorporated under the provisions of the Business Corporation Law of 1988 (15 Pa.C.S. §§1100 et seq.).

FOURTH. The Corporation shall have the authority to issue 1,000 shares of common stock, par value \$10 per share. The holders of the common stock shall have one vote per share and shall not be entitled to accumulate their votes in the election of the directors.

FILED 7:59PM
 FEB 15 1994

FIFTH. The name and address of the incorporator is Melvin H. Levy, Esquire, ONE Tower, Suite 3055, 400 Grant Street, Pittsburgh, Pennsylvania 15219.

SIXTH. A director of the Corporation shall not be personally liable for monetary damages for any action taken, or any failure to take any action unless the director has breached or failed to perform the duties of his or her office under 15 Pa. C.S. §§11 and §1721 and such breach or failure to perform constitutes self-dealing, willful misconduct or recklessness; provided, however, that the foregoing provision shall not eliminate or limit (i) the responsibility or liability of a director pursuant to any criminal statute, or (ii) the liability of a director for the payment of taxes pursuant to local, state or Federal law. Any repeal, modification or adoption of any provision inconsistent with this Article SIXTH, shall be prospective only, and neither the repeal or modification of this Article nor the adoption of any provision inconsistent with this Article shall adversely affect any limitation on the personal liability of a director of the Corporation existing at the time of such repeal or modification or the adoption of such inconsistent provision.

EXECUTED this 10th day of February, 1994.

M. H. Levy, Esquire
 Incorporator

COMMONWEALTH OF PENNSYLVANIA
 DEPARTMENT OF STATE
 JULY 2, 2010

TO ALL WHOM THESE PRESENTS SHALL COME, GREETING:

UNITED MINING EQUIPMENT, INC.

I, Basil L. Meranda, Acting Secretary, Secretary of the Commonwealth of Pennsylvania

Do hereby certify that the foregoing and annexed is a true and correct copy of

ARTICLES OF INCORPORATION filed on February 15, 1994 which appear of record in this department.

IN TESTIMONY WHEREOF, I have hereunto set my hand and caused the Seal of the Secretary's Office to be affixed, the day and year above written.

Basil L. Meranda
 Acting Secretary of the Commonwealth

ZC8016333.ZC No. 8016333

Trademark Registration Certificate

UME

Approved Goods and Services (Class 7)
 Pumps (machine); electromagnetic valves; valve (parts of machines); filters (parts of machines or engines); hydraulic controls for machines, motors and engines; throttling fittings and throttling pieces; lubricating pumps; pressure valves (parts of machines); hydraulic pressure pumps; hydraulic pressure valves; hydraulic pressure oil filter; hydraulic pressure components (excluding vehicle hydraulic pressure system); hydraulic pressure coupling wares (End)

Registrant: United Mining Equipment Inc.
 Registration Address: 579 Pittsburgh Road Butler, PA 16002-7659 U.S.A.
 Valid term of registration: From November 7, 2012 to November 6, 2022
 Signature of the Head of the Trademark Office: XU Ruihan

[Seal of the Trademark Office of the State Administration for Industry and Commerce of the PRC]

UNITED MINING EQUIPMENT
 579 Pittsburgh Road Butler, PA 16002 Phone (724) 861-1036 Fax (724) 861-0107

Resolution of United Mining Equipment Inc.

United Mining Equipment Inc. (the Company) hereby resolved that:

- Donald R. Simms (passport number: 095947329) is hereby appointed to be the authorized representative of the Company to be responsible for all matters in respect of the establishment of a wholly foreign owned enterprise in Mexico to engage in the following business: sale, import and export of mining equipment and components, and the provision of repair and maintenance services for mining equipment (WFOE).
- The authorized representative's powers include but not limited to: to execute on behalf of the Company all documents and to do all other acts and things as he may consider necessary or desirable in connection with:
 - The same pre-approval of the WFOE;
 - The establishment of the WFOE and the post registration formalities;
 - The execution of lease agreement on behalf of the Company for the business premises of the WFOE;
 - Any other formalities or documents in connection with the establishment or operation of the WFOE which are required to be done by the Company.
- The authorized representative may delegate to any person the whole or part of the authority and powers granted by this Resolution provided that a written Power of Attorney is issued in due course to such person by the authorized representative.

SIGNED BY:
 Name: Donald R. Simms
 Title: President
 Date: July 8, 2010

Commonwealth of Pennsylvania
 County of Butler

Don R. Simms
 President

COMMONWEALTH OF PENNSYLVANIA
 Bureau of
 State & County Records
 Harrisburg, PA 17120-0001
 Mailing: Harrisburg, PA 17120-0001

COMMONWEALTH OF PENNSYLVANIA
 DEPARTMENT OF STATE
 No. 201002488

OFFICE OF THE SECRETARY OF THE COMMONWEALTH
 JULY 28, 2010

PENNSYLVANIA, SS

I, Basil L. Meranda, Acting Secretary of the Commonwealth of Pennsylvania, DO HEREBY CERTIFY, that it appears by the records of this office that

ANDREA L. MURPHY

whose official attestation appears upon the attached instrument, was at the time of signing the same, a duly appointed, commissioned and qualified NOTARY PUBLIC in and for the Commonwealth of Pennsylvania, USA, with a registered office in the

MIDDLESEX TOWNSHIP, BUTLER COUNTY

and as such officer had power to administer oaths and affirmations, to take depositions and affidavits, to take and receive the acknowledgment or proof of all deeds, conveyances, mortgages, and other instruments of writing, recording or conveying any lands, tenements or hereditaments in any part of said state, receive the proof of acknowledgment of all instruments of writing relating to commerce or navigation, letters of attorney, and such other writings as have been usually granted or acknowledged before notaries within said Commonwealth according to law, in all matters belonging or incident to the exercise of notarial office, and accordingly full faith and credit are due and ought to be given to the official acts of the said notary;

I, DO FURTHER CERTIFY, That I verify before the seal and signature attesting the same are genuine.

IN TESTIMONY WHEREOF, I have hereunto set my hand and caused the seal of my Office to be affixed, the day and year above written.

Basil L. Meranda
 Acting Secretary of the Commonwealth

Certificates 证书

